

Import matching packages (footprints) to the layout

From IBF-Wiki

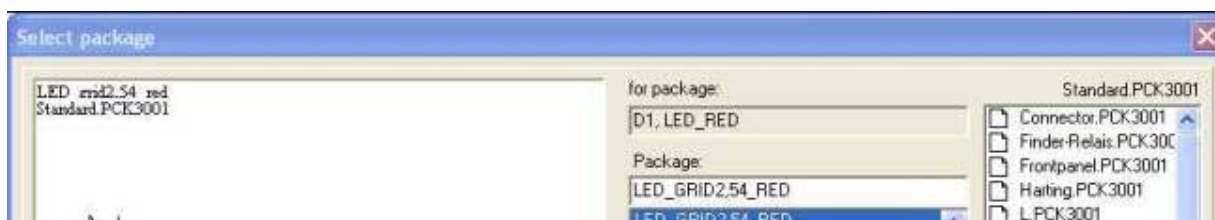
This article is part of an introduction tutorial called CrashCourse2

Download this article as PDF-File

Every schematic symbol in TARGET 3001! has a package proposal. The word package in TARGET 3001! stands for "footprints" or more exact: solderable "landmarks". If you want to start with the package import, see cursor, a list of all package proposals according to the symbols used in the schematic appears. Select from this list each of the packages you'd like to import to the Layout:

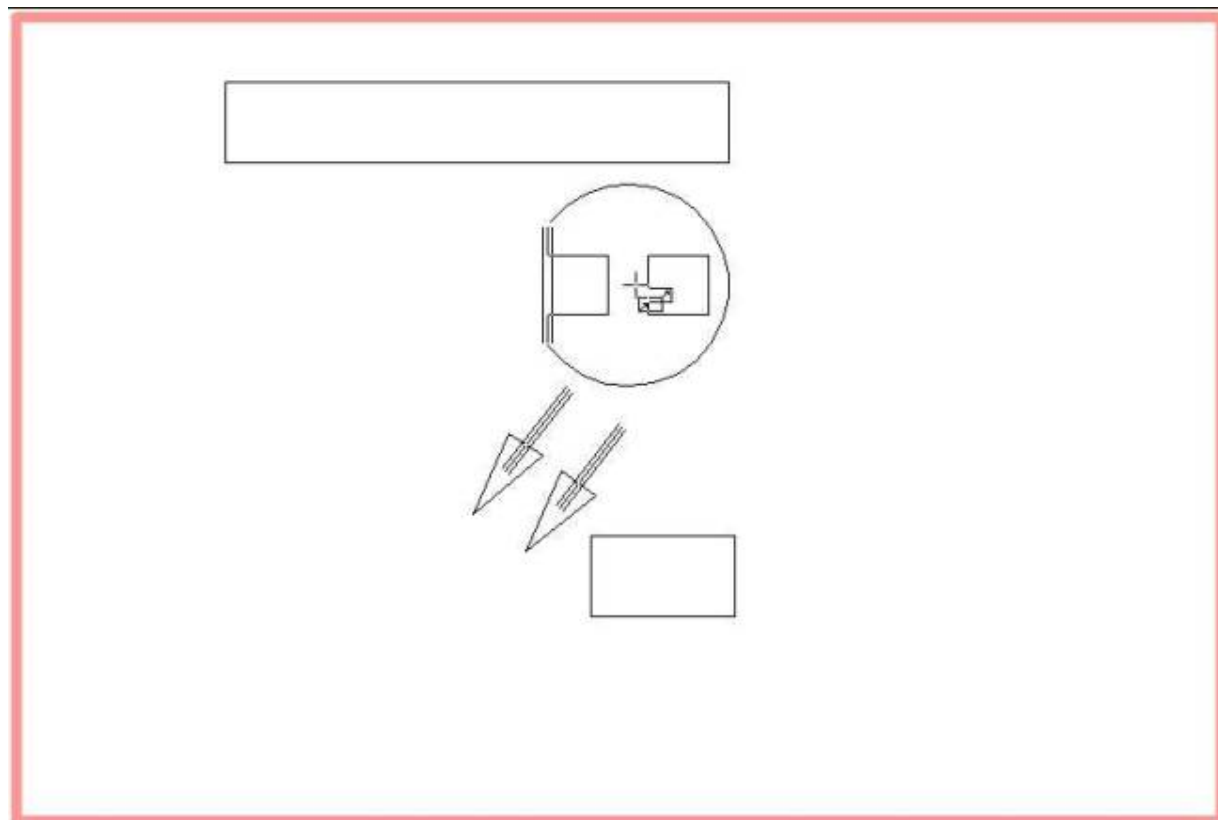


If you decide for the import of the LED, visualize the package in the browser prior to insertion. Because we want to use it, we confirm the dialog by "**OK**".

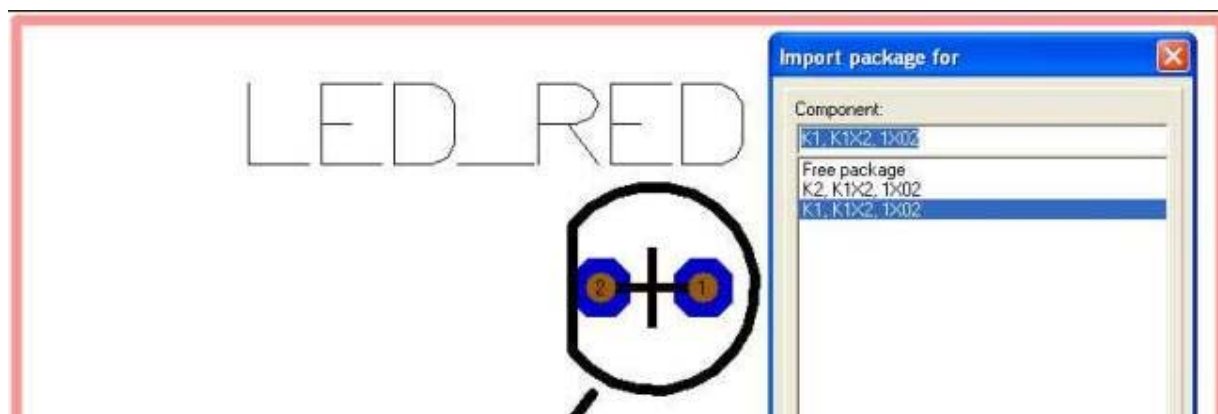


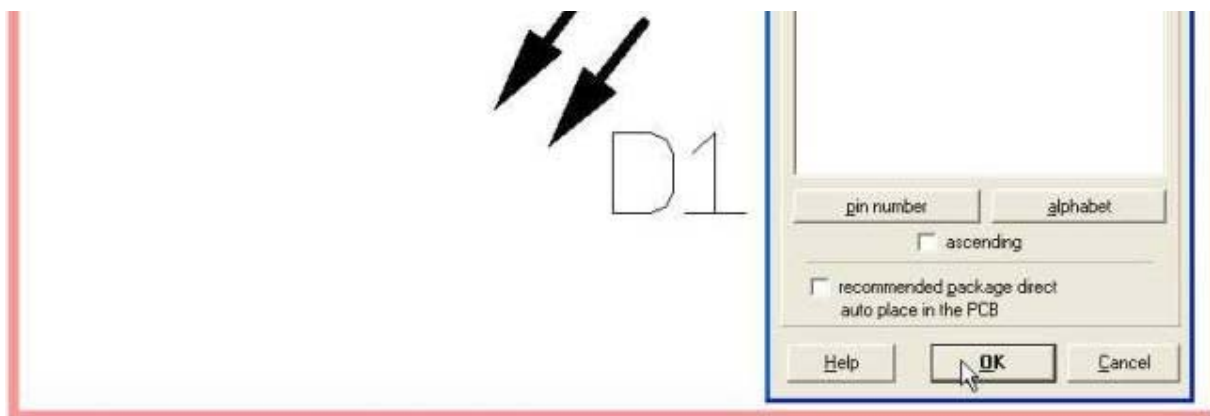


Now its shape is fixed to the cursor and allows rotation by **M2**,...

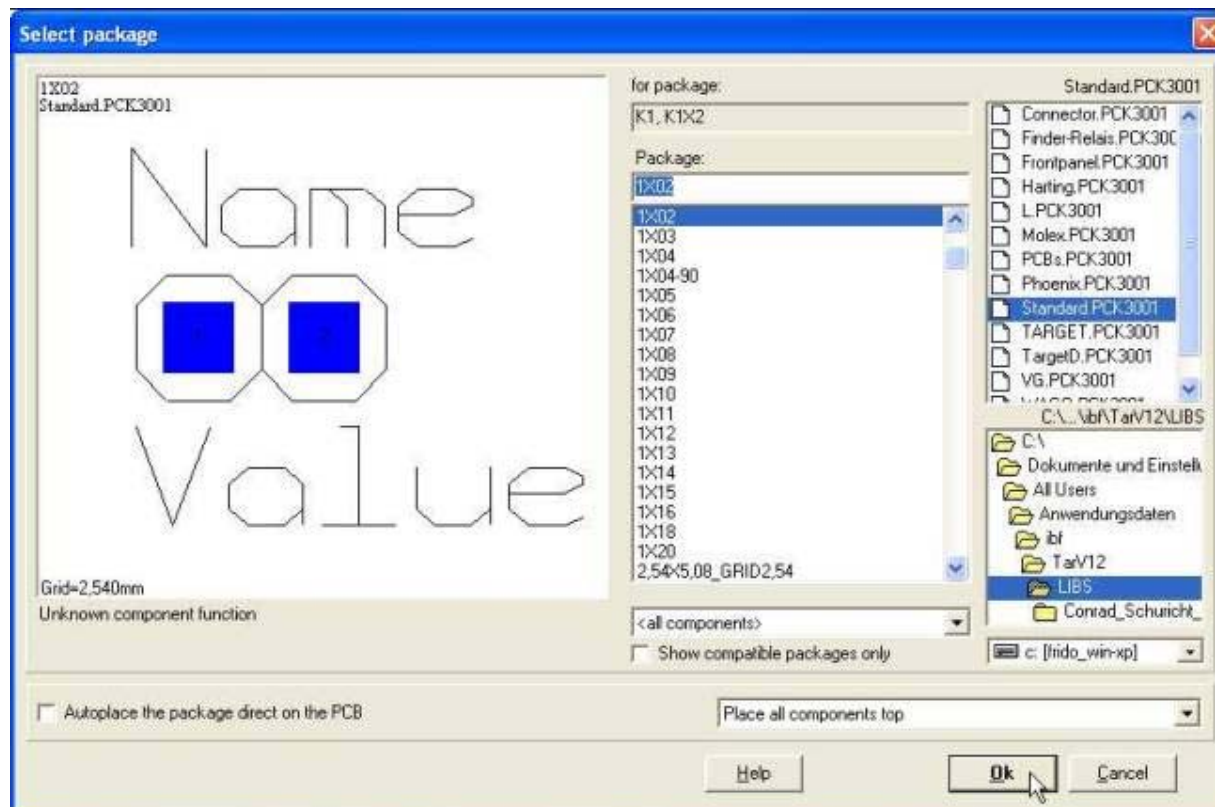


...before it is placed by **M1**. Immediately afterwards the selection list opens for insertion of another package. We choose the connector K1,...

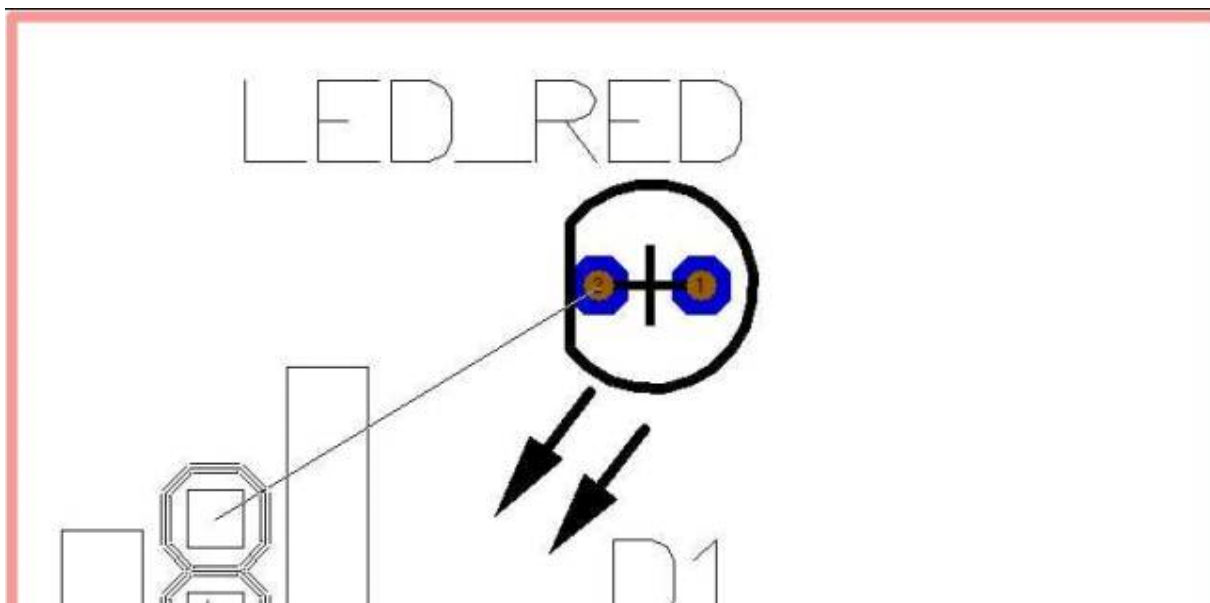




...confirm it by **[[OK]]**...

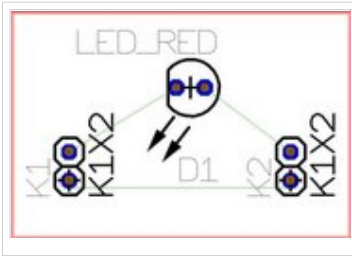


...and again it is fixed to the cursor ready for placement. At the same time an **[[Airwires / ratsnest|airwire]]** shows the electrical connection. After placement of the connector we see the airwire in green and the pads in blue.





Again the list opens, we select the second connector and place it.



The airwires are no tracks yet. Those must be drawn separately. Do so by hand or by the use of one of the TARGET-internal autorouters, see the next step...

Next step

One step back

Back to the overview

Retrieved from

"http://ibfriedrich.dyndns.org/wiki/ibfwikien/index.php?title=Import_matching_packages_%28footprints%29_to_the_1

Categories: Layout

-
- This page was last modified 09:59, 30 August 2007.