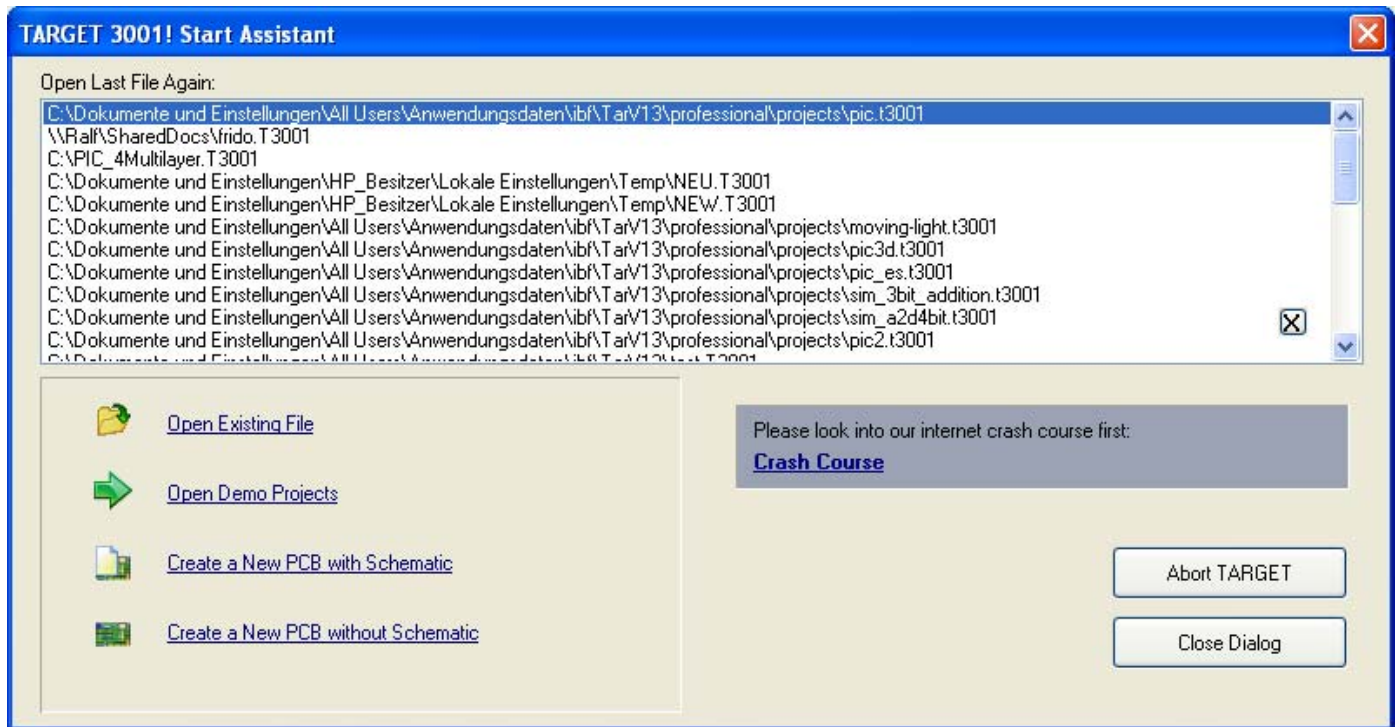


Begin a new project

From IBF-Wiki

This article is part of an introduction tutorial called CrashCourse2

Download this article as PDF-File



Using the Start assistant you can select one of the 30 recently used projects from the list. You can open a different existing project or create a new project either with schematic or without. In the coloured field on the right you find a link to this crashcourse. In our case we decide for **Create a New PCB with Schematic**. An empty schematic page opens...

Next step

One step back

Back to overview

Retrieved from "http://server.ibfriedrich.com/wiki/ibfwikien/index.php?title=Begin_a_new_project"

Categories: About TARGET 3001!

IBF-Intern:

- This page was last modified 13:26, 15 January 2009.
- This page has been accessed 7,146 times.