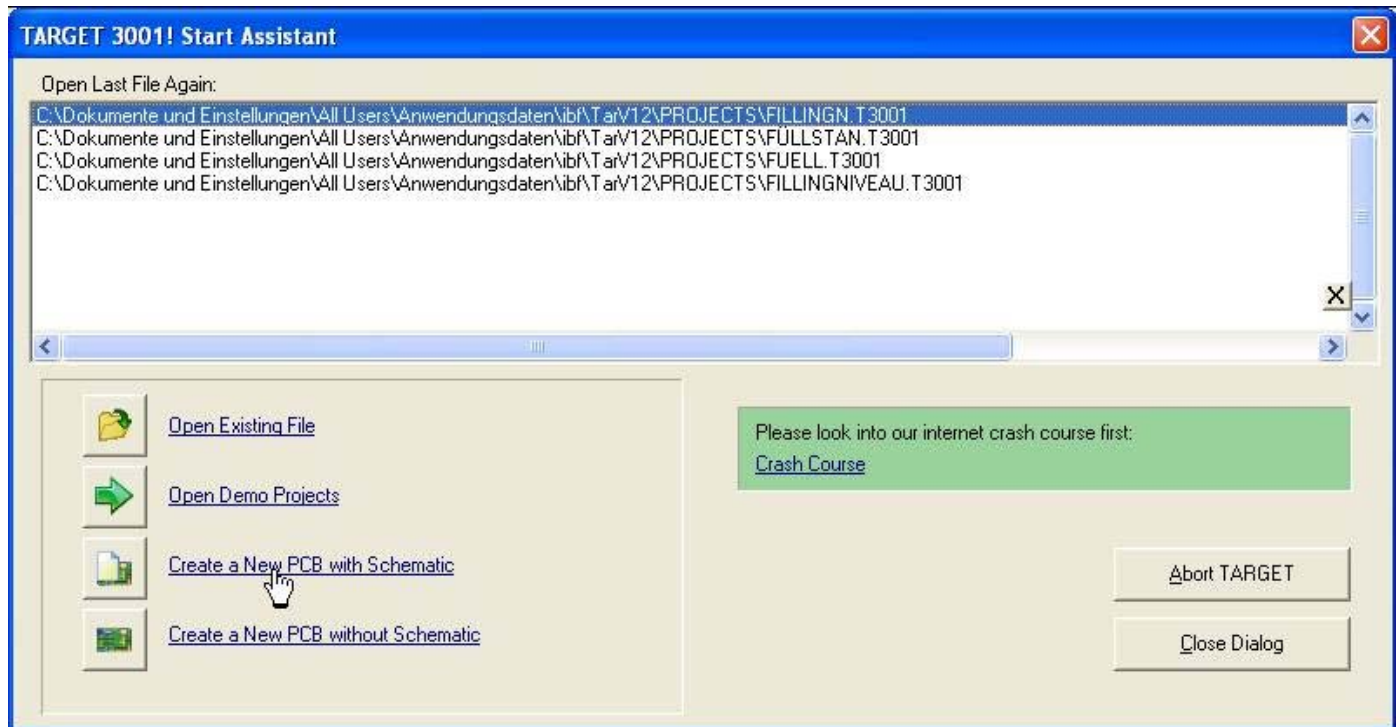


# Begin a new project

## From IBF-Wiki

This article is part of an introduction tutorial called CrashCourse2

Download this article as PDF-File



With the Start assistant you decide whether to open an existing project or to create a new project either with schematic or without. In our case we decide for a new project **with** schematic. An empty schematic page opens...

Next step

One step back

Back to overview

Retrieved from "http://ibfriedrich.dyndns.org/wiki/ibfwikien/index.php?title=Begin\_a\_new\_project"

Categories: About TARGET 3001!

- This page was last modified 09:37, 30 August 2007.