

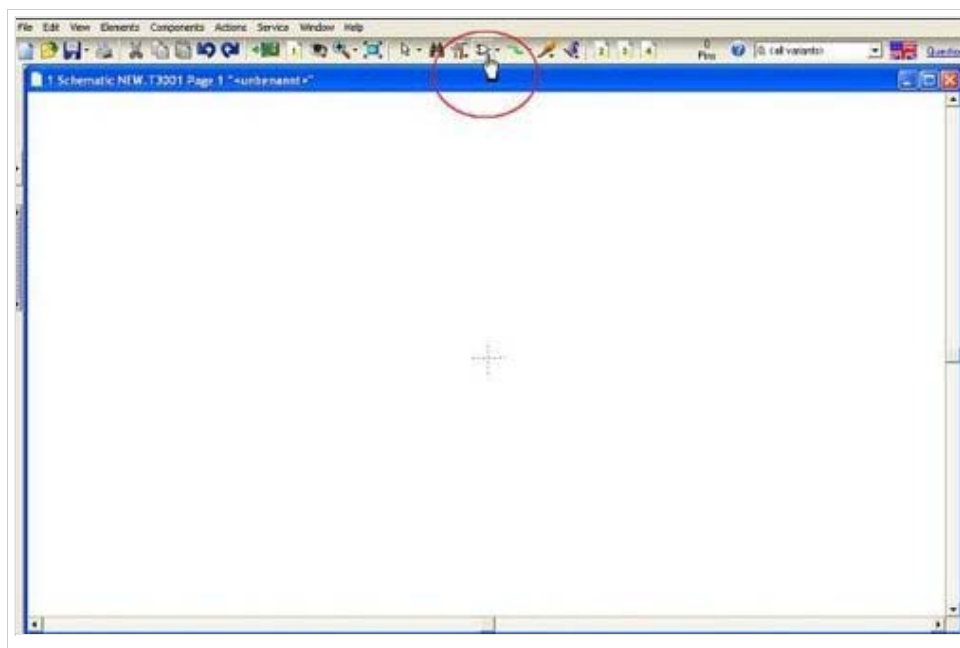
# Import a component symbol to the schematic

## From IBF-Wiki

This article is part of an introduction tutorial called CrashCourse2

Download this article as PDF-File

The following image shows an empty schematic page. Now we import a symbol from the component library. Click **M1** upon the symbol button on the icon bar. You might also press button **[Ins]** from the keyboard.



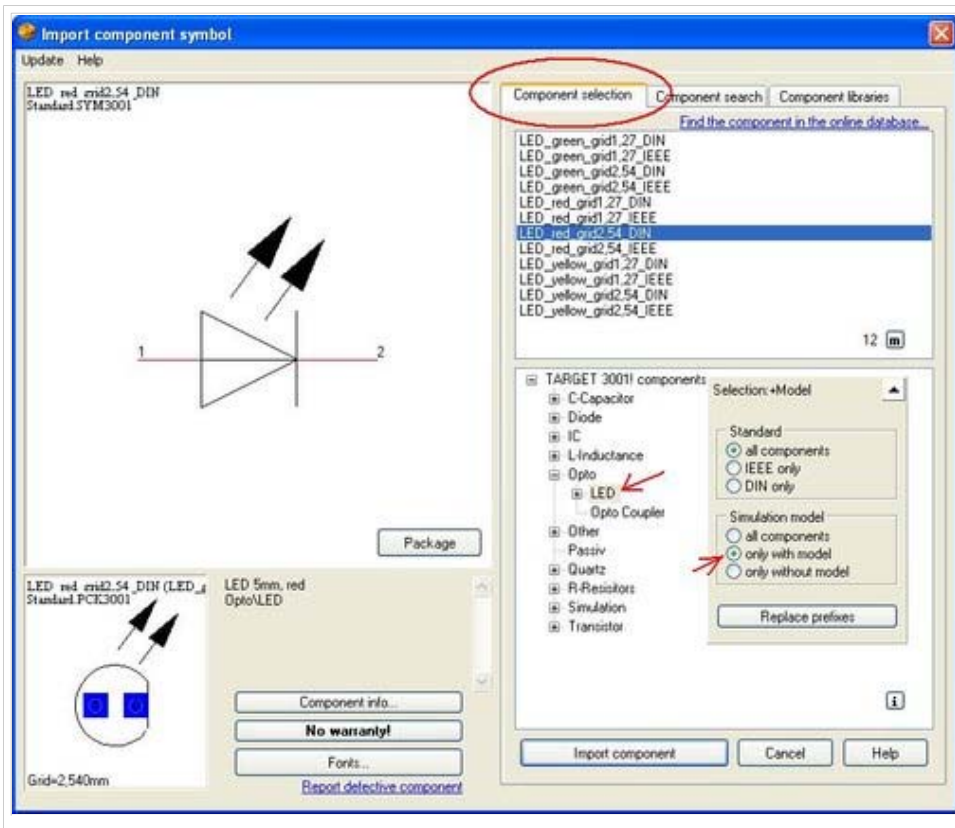
[More details?](#)

[Origin](#)  
[Grid](#)  
[Mousekeys](#)  
[Key combinations](#)  
[Zoom](#)

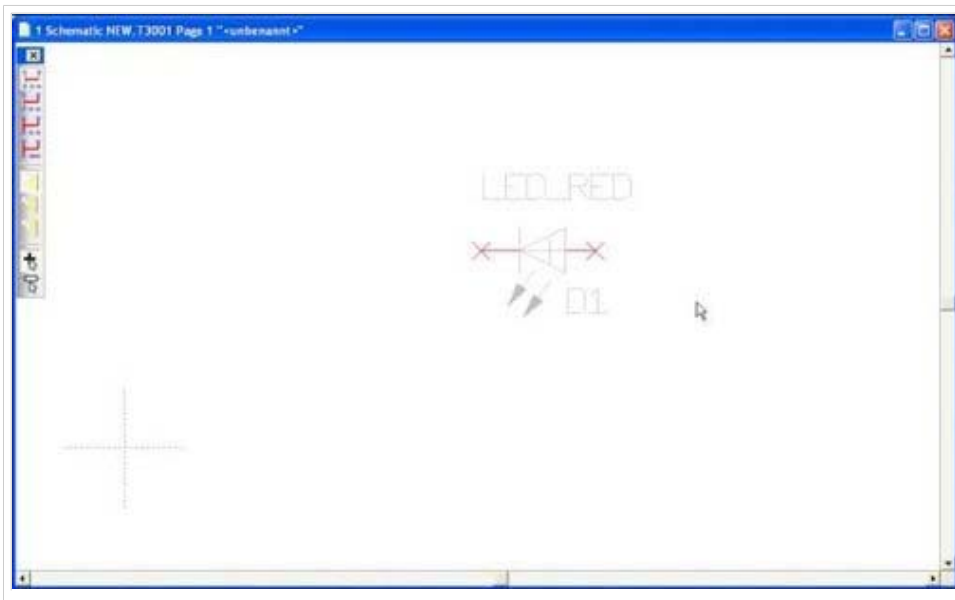
The library browser opens and allows component search and import. In our case we pick a **LED red, 5mm**.

[More details?](#)

[Libraries](#)



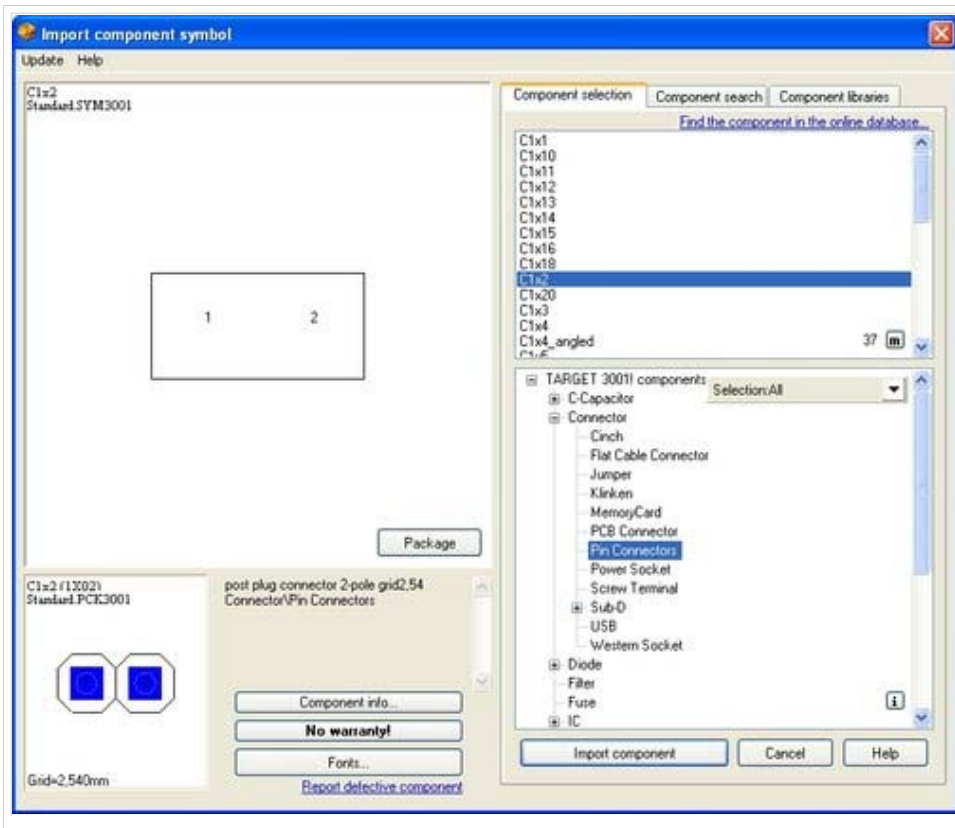
After clicking "**Import component**", place the symbol on the schematic by M1 preferably within the first quadrant of the underlying coordinate system. In case the component value appears too big, please change it by M11 upon the handle cross. In the appearing dialog modify the entry at "Component Value" to LED\_RED. "D1" is the "Component Name".



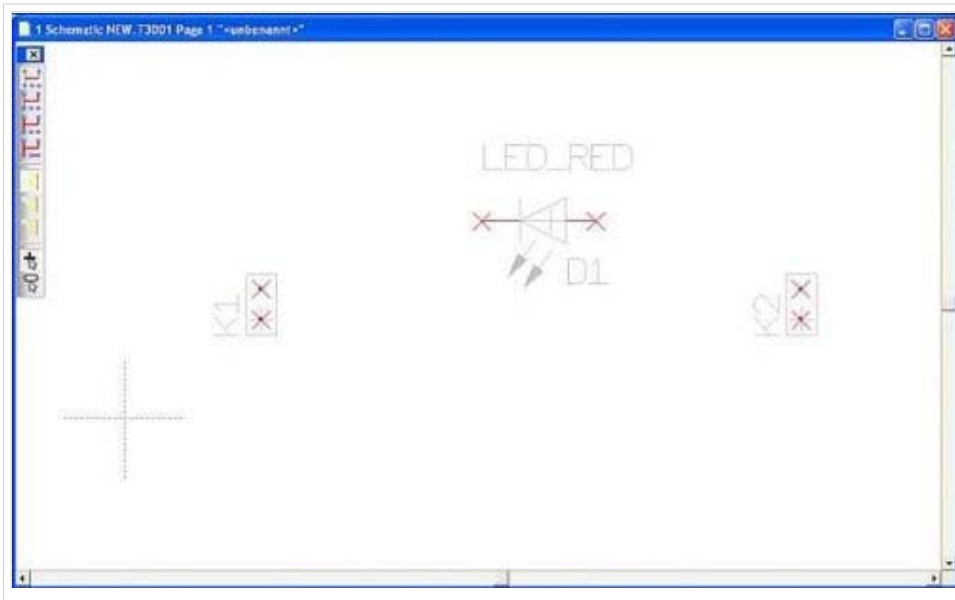
More details?

Select  
Displace  
/ Move /  
Relocate  
from

Now get in two dual pole connectors to the schematic by the same procedure...



...and place them at a convenient location. Rotate any symbol prior to placement by **M2**. That's the way our schematic might look like now:



Next step

One step back

Back to overview

Retrieved from

"[http://server.ibfriedrich.com/wiki/ibfwikien/index.php?title=Import\\_a\\_component\\_symbol\\_to\\_the\\_schematic](http://server.ibfriedrich.com/wiki/ibfwikien/index.php?title=Import_a_component_symbol_to_the_schematic)"

Categories: Components/Libraries | Schematic

---

**IBF-Intern:**

- This page was last modified 09:48, 5 June 2008.
- This page has been accessed 4,516 times.