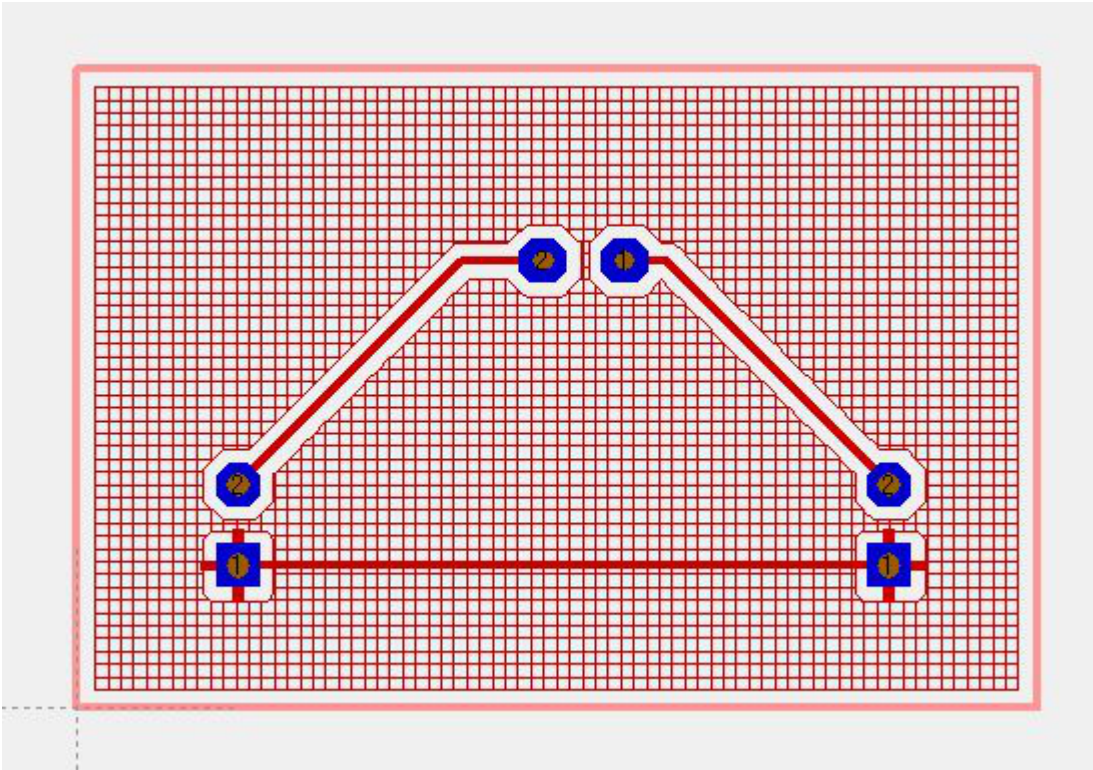
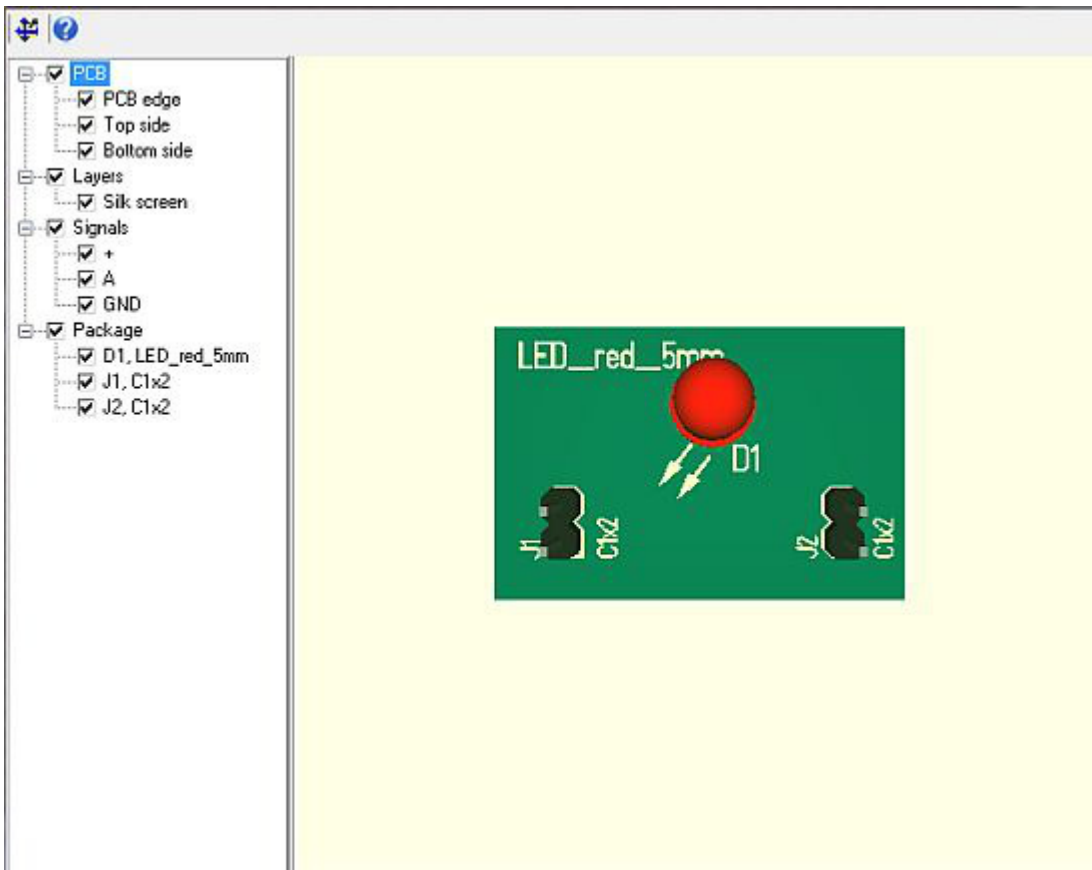


3D-view of the layout

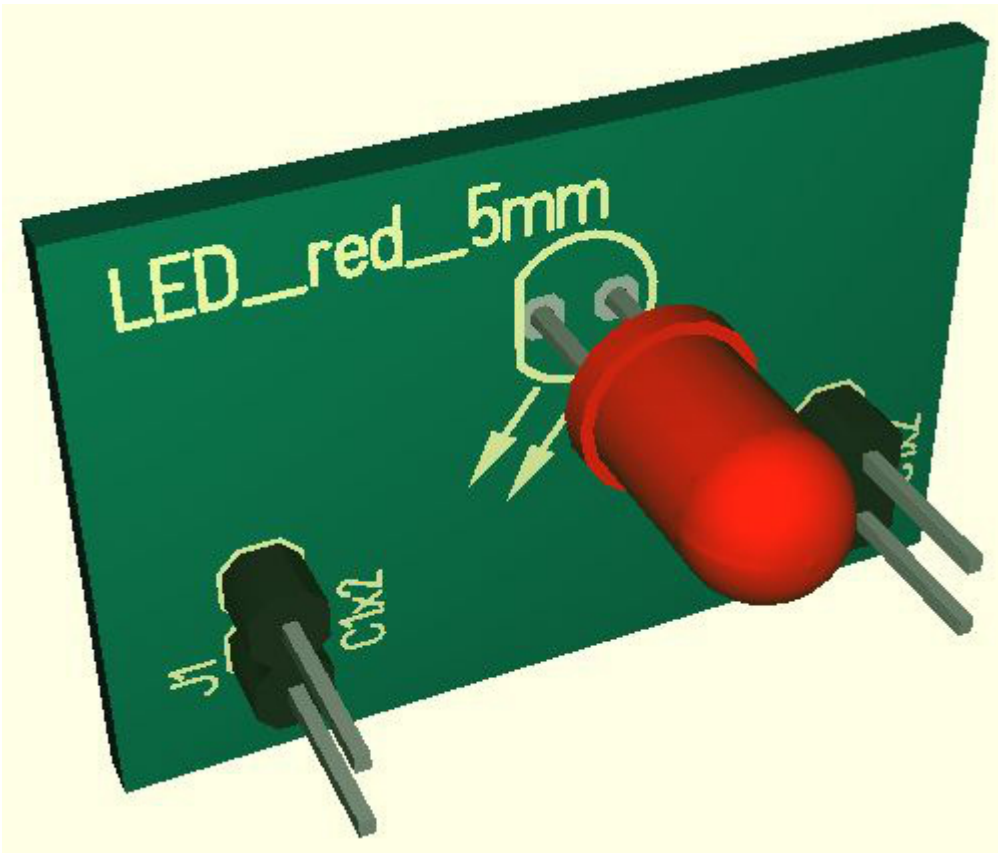
Currently the [layout](#) looks like that:



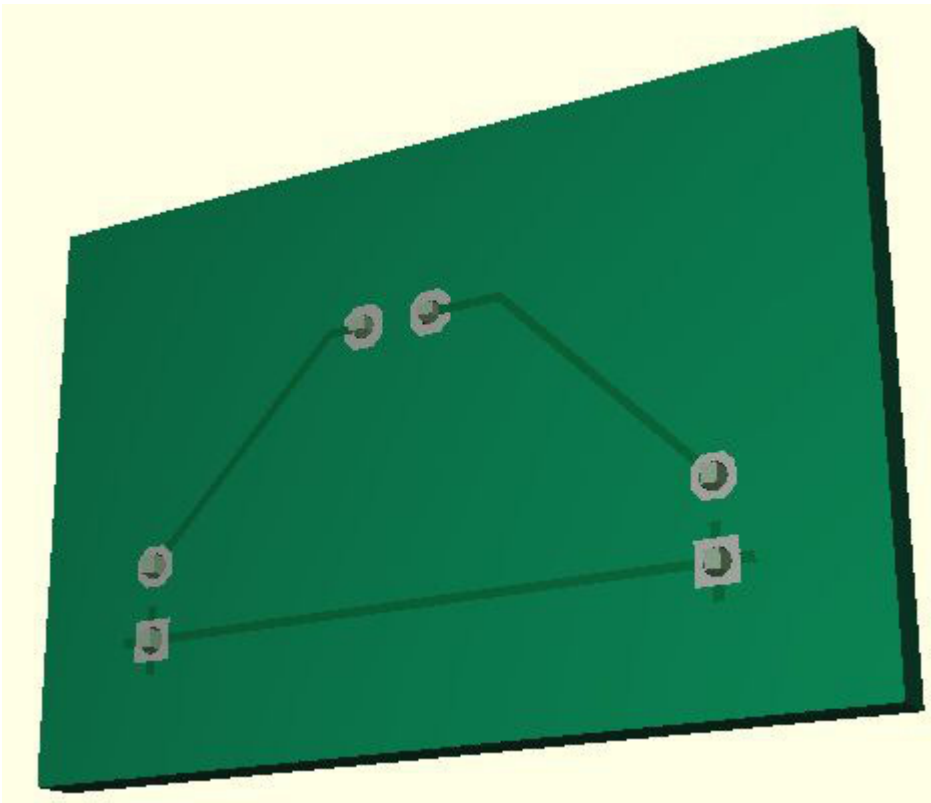
View it in [3D](#) by menu "Actions/3D-View". After a short time of computation the result is:



You can turn the object to all sides by [M1H](#) or shift it by [M2H](#). Zoom in and out using the mouse wheel.



For reasons of computing time the ground plane with its grid structure on the bottom side is omitted.



With a double click ([M11](#)) the PCB can be rotated continuously. Clicking [M11](#) again switches auto rotation off. During rotating you can interfere with [M1H](#). Left side in the browser bar you can toggle parts visible and invisible with ticks. With a [M1](#) click onto the names you can mark the parts in blue color on the right side in the 3D view.