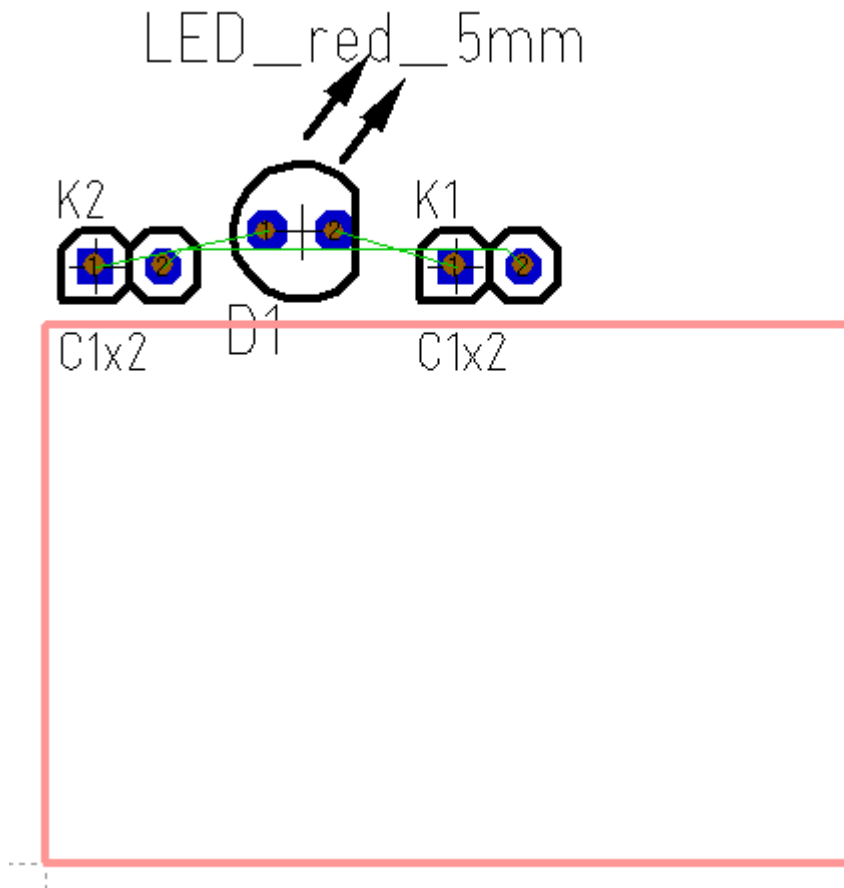

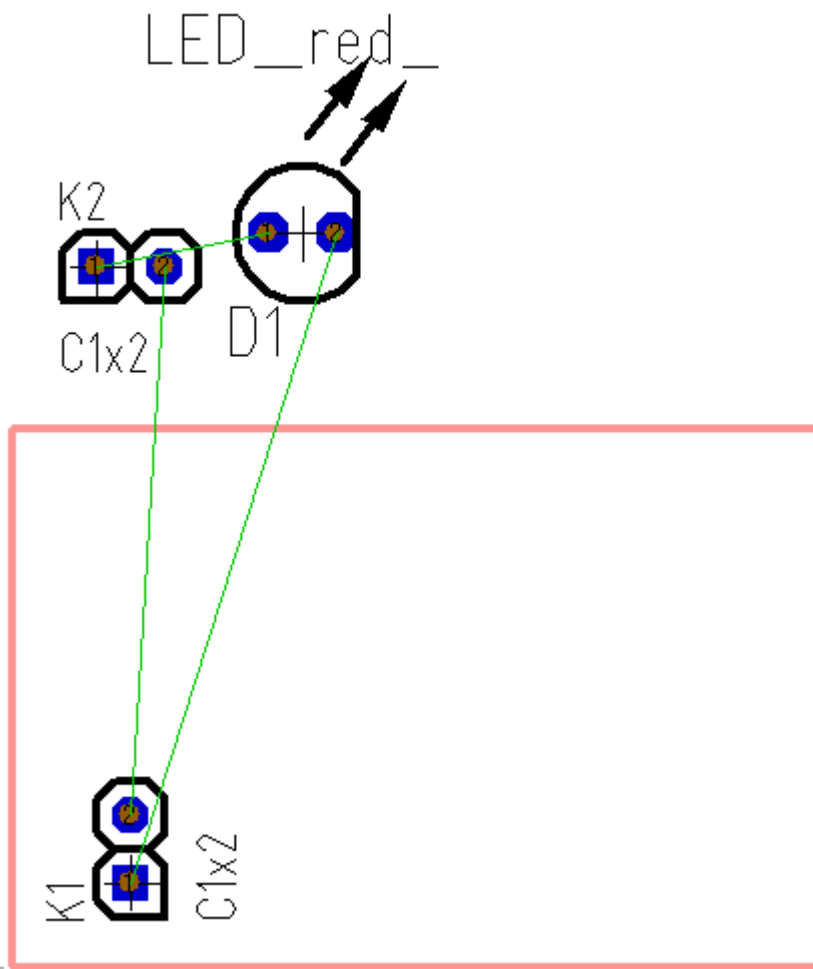


Place tracks by hand

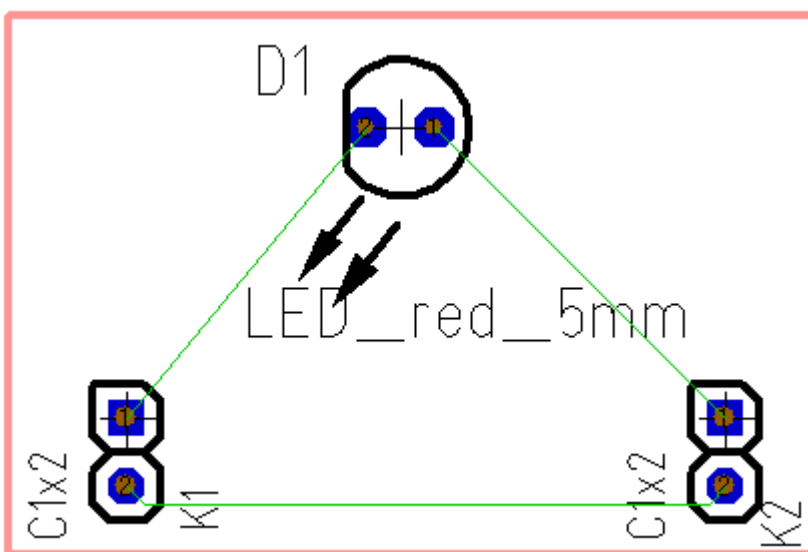
The autoplacer places e.g. randomly your packages at the edge of the board outline:




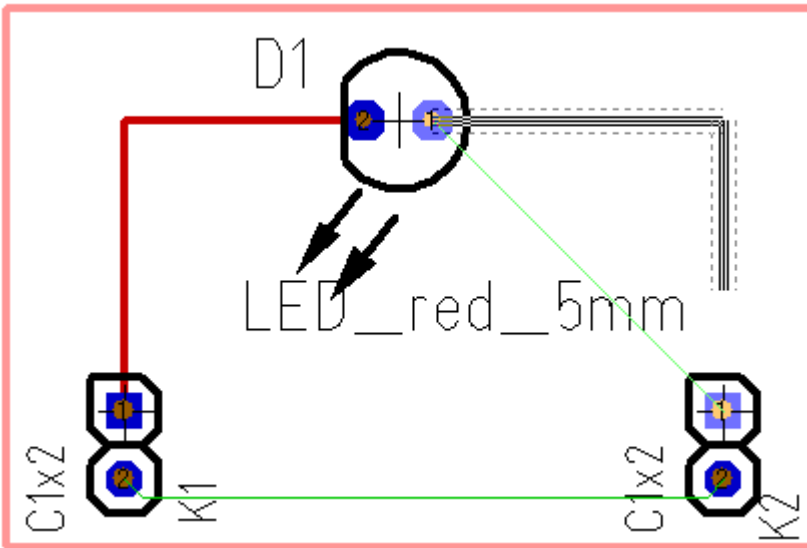
First drag the components into position. For doing so click with mousebutton held (M2) upon the handle cross of a package or at any drawing element of the package for grabbing it. In the second case this button  needs to be pushed, otherwise you won't grab all of the package but only a part of it. You will find this button in the [Sidebar](#) in section "Settings".



You can rotate the the components during the dragging by pressing the right mousekey **M2**. You also might touch them again for rotation. NOTE: Sometimes little fractions of drawings remain during the displacement. Press key [N] for refreshing the screen! At the end your placement might look like this:



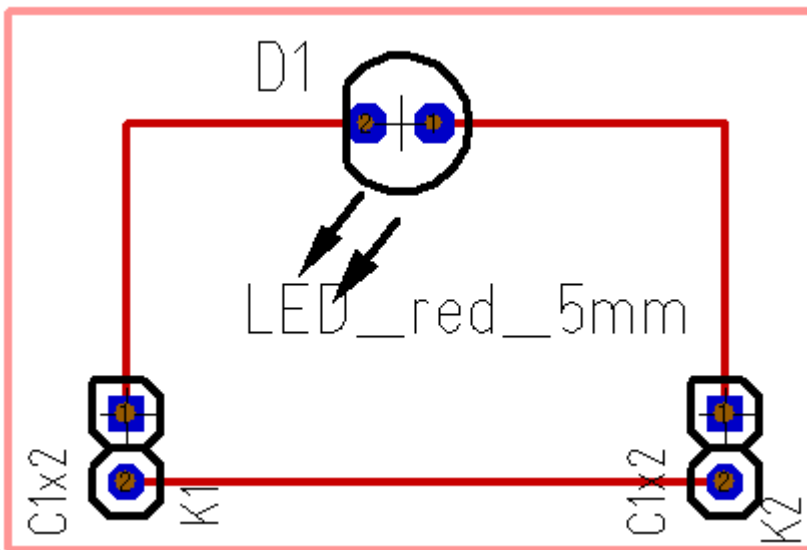
Clicking this icon  will let you start Drawing the [tracks](#). Click on a pad and drag the mouse to another pad for creating the connection. Toggle the bending mode by the use of the space bar or use the buttons in the sidebar in section "Settings":



The dashed line which goes along beside the signal line represents a spacing having the the bigger value of both

- the element aura set and
- the minimum spacing of the signal.

But if in the signal's properties the minimum spacing only is set "Normal", the standard spacing is used. This standard spacing is set in "Settings/Settings (Project)" at option "Standard track-spacing (PCB)". After all tracks are placed and all green airwires (ratsnest) have vanished your layout might look like this:



Also see article [Track](#).